



Soil Tribes

Community of Practice Guide



Funded by
the European Union



Content

01

About SoilTribes Project

02

SoilTribes Community of Practice

03

Why Join SoilTribes Community of Practice?

04

Who can join?

05

Community of Practice Structure

06

Activities & Opportunities

07

Responsibilities of Community of Practice Membership

08

How to join?

09

FAQs



About SoilTribes

The **SoilTribes** project aims to transform the way society values and interacts with soil by fostering soil literacy, connectivity, and sustainable practices. This innovative initiative focuses on empowering multi-actor communities—referred to as "tribes"—to co-create and implement solutions that address the critical challenges facing soil health today.

SoilTribes is rooted in the European Union mission "A Soil Deal for Europe" and aligns with its goals to restore soil health, engage communities, and increase soil literacy.

By leveraging interdisciplinary collaboration at the nexus of science, technology, arts, and society, the project seeks to inspire "back to Earth" narratives that redefine how individuals and communities understand and care for soils. The project's activities are structured around multiple interconnected layers of engagement: a transnational Community of Practice (CoP) to design innovative soil-related resources; national Soil Lab Activators to promote tailored educational and engagement initiatives; and regional Stewardship Assemblies to implement citizen-led, place-based solutions to local soil challenges.

Additionally, the project employs a robust financial support scheme to fund third-party initiatives that innovate in soil literacy and engagement across Europe. Through its glocal approach—combining global vision with local action— SoilTribes will deliver impactful outputs, including new educational tools, artistic exhibitions, public campaigns, and participatory events.



Community of Practice

About

The SoilTribes Community of Practice (CoP) is a collaborative platform designed to bring together stakeholders from diverse sectors to advance soil sustainability, share knowledge, and co-develop innovative solutions. Whether you are an academic, policymaker, business leader, or a member of society, joining the CoP offers an opportunity to contribute to the global effort to improve soil health and promote sustainable land management.

What is the SoilTribes CoP?

The SoilTribes CoP serves as the central hub of the SoilTribes network, bringing together multidisciplinary teams from the fields of Academia, Business, Society, and Government.

Our goal is to foster collaboration and the exchange of knowledge, resources, and expertise in soil sustainability and literacy. We believe that sharing insights and experiences within and across sectors will help us create innovative solutions to address the challenges of soil degradation and sustainability.



Why join the SoilTribes CoP?

Access to Knowledge and Expertise in soil sustainability and literacy.

Networking Opportunities with stakeholders.

Influence on policy development at various levels (local, national and international).

Participation in high impact activities, including workshops, bootcamps or meetups and other events.

Access to funding opportunities.

Visibility and recognition.



Who can join?

We are seeking a **diverse group of individuals and organizations** with an interest in soil sustainability and soil literacy.

The **target groups** within the quintuple helix system are:

Academia:

- Higher Education Institutions, Research Centers and Schools;
- Soil Scientists, Technologists, Advisors, Educators and Trainers, Students and Trainees;

Business:

- Business Associations, Companies, and Start-ups;
- Farmers, Foresters, Urban and Spatial Planners.

Political:

- Local/ Regional/ National public authorities, European organizations;
- Policymakers, Civil Servants;

Society:

- CCIS;
- Artists, Communicators, Creatives, Citizens;

Environment:

- Environmental Organizations.



CoP Structure

To enhance practitioner involvement and foster collaborative problem-solving, the CoP is organized into **Working Groups (WGs)**, each focused on specific challenges related to the four thematic pillars (Academia, Business, Government and Society) of the project.

These groups allow members to engage deeply with issues, co-develop solutions, and align their work with the CoP's overall objectives. The WGs are tasked with:

Identifying key challenges related to soil literacy and sustainable land management.

Co-creating innovative solutions to address these challenges.

Providing **input for policy recommendations**.



CoP Structure

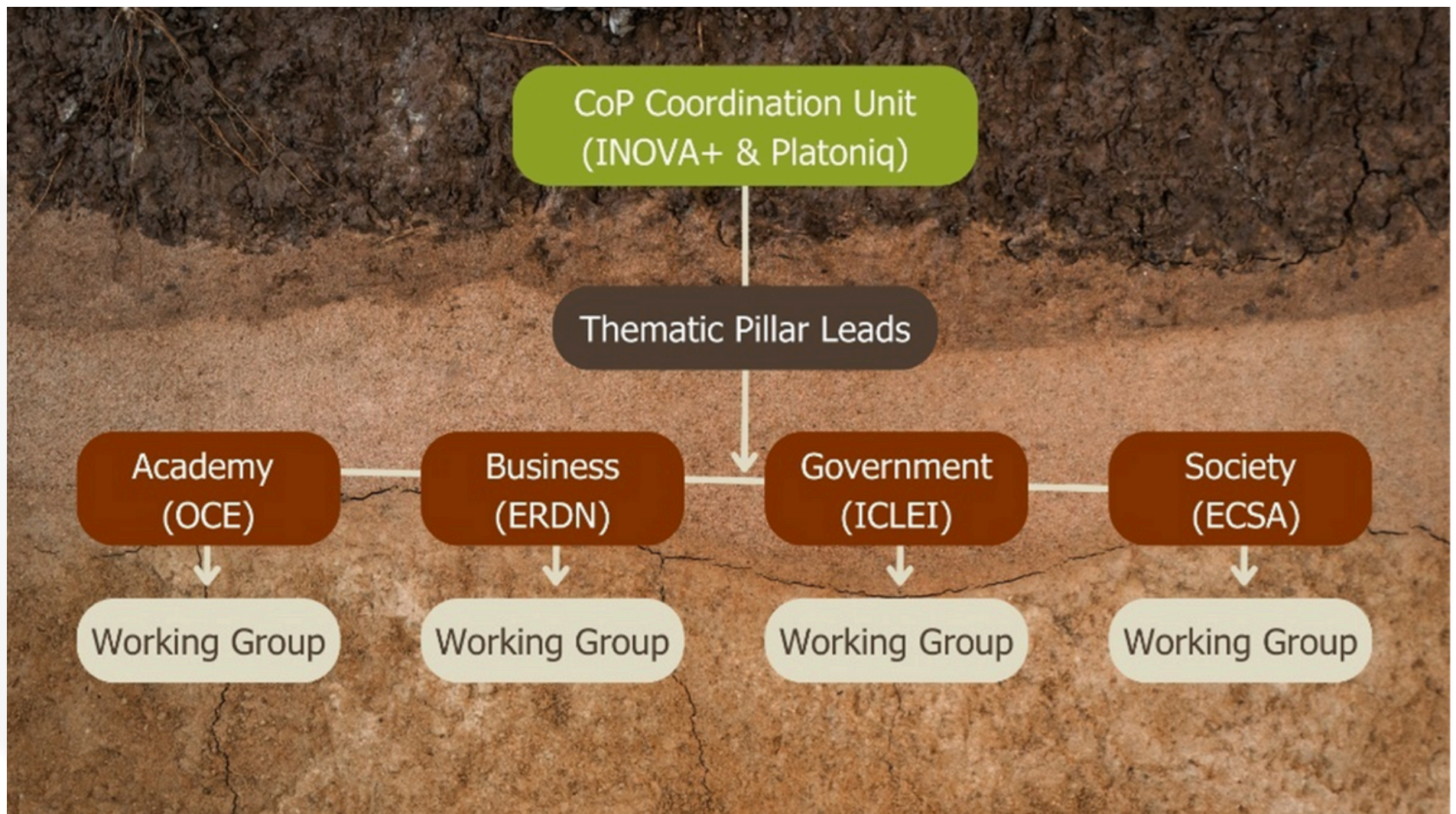


Figure 1 - SoilTribes CoP Structure

The CoP facilitates the coordination of these WGs by organizing regular meetings, workshops, and peer-learning activities, ensuring knowledge sharing across the CoP.

The WGs operate on a voluntary, expertise-driven basis, allowing members to contribute based on their interests, skills, and professional goals, fostering a flexible and dynamic environment for collaborative problem-solving.



Activities & Opportunities

As a member, you will have the chance to engage in various CoP activities, including:

Design Thinking Bootcamps: Collaborative, hands-on sessions aimed at creating innovative solutions for soil management challenges.

Cross-Fertilization Workshops: Workshops that bring together stakeholders from different sectors (e.g., academia, business, government) to exchange knowledge and best practices.

Policy Discussions: Engage in discussions to develop and influence soil-related policies and legislation at local, national, and international levels.

Micro-Grant Calls: Submit and develop projects to receive funding for innovative soil management solutions.



Activities & Opportunities

Event/Activity	Active Participation	Consulted Members	Informed Members
Design Thinking Bootcamps	Yes (Co-creates solutions)	No	No
Regular Meetups	Yes (Engages and shares knowledge)	Yes (Provides insights)	No
Cross-Fertilization Workshops	Yes (Participates and exchanges knowledge)	Yes (Shares expertise)	No
Joint Policy Meetings	Yes (Develops recommendations)	Yes (Provides feedback)	No
Micro-Grant Calls	Yes (Submits and develops projects)	No	Yes (Notify about the opportunities)
Final Policy Paper	Yes (Writes and validates)	Yes (Gives input)	Yes (Reads final version)
Surveys & Feedback Loops	Yes (Implements changes)	Yes (Provides feedback)	No
Newsletters & Reports	Yes (Monitors and reports)	Yes (Provides insights)	Yes (Receives updates)



Responsibilities of CoP Membership

Active Participation: Engage in CoP activities such as events, discussions, and collaborative projects, contributing knowledge and experience.

Collaboration and Knowledge Sharing: Actively participate in open dialogue, knowledge exchange, and co-create solutions aligned with the CoP's goals.

Feedback and Evaluation: Provide constructive feedback on activities, including completing impact assessments and participating in evaluations to enhance the effectiveness and impact of the CoP.

Adherence to CoP Guidelines and Ethics: Follow CoP guidelines and ethical standards to ensure transparency, inclusivity, and respect in all activities.

Commitment to the CoP's Objectives: Engage in activities supporting the CoP's long-term goals, ensuring its sustainability and relevance beyond the project's lifecycle.



How to join?

To become a member of the SoilTribes CoP, simply **fill out our Expression of Interest (Eoi) form** to share your expertise, interests, and preferred level of engagement.

This form allows us to understand your interests and expertise, and helps place you in the appropriate thematic pillar and level of participation.

We welcome contributions from a wide range of sectors, and your participation will help shape the CoP's activities and outcomes.

Register here: https://ec.europa.eu/eusurvey/runner/SoilTribes_eoi





FAQs

How often do CoP meetings or events take place?

The CoP activities within the SoilTribes include a range of events scheduled to engage members in various collaborative initiatives throughout the project's duration. These events will be organized periodically to ensure active participation and ongoing collaboration among CoP members.

What is the sustainability and future of the CoP?

The SoilTribes CoP is designed to be a sustainable and long-term platform. You will play a key role in advancing the development of the community and its resources. Together, we will work towards ensuring that the CoP remains active and impactful, fostering continuous collaboration and innovation.

What tools are used for communication within the CoP?

The main tool used for communication within the SoilTribes CoP is the SoilTribes platform, a central digital space built on the Decidim framework, enabling knowledge sharing, event organization, and collaborative engagement among members.



FAQs

What are the differences between joining the CoP or the Network?

The table below outlines the differences between joining the CoP and the Network.

	Community of Practice	Network
Goal	A dynamic community that strengthens expertise and fosters innovation through collaboration and shared experiences on soil sustainability challenges	An online network that aims to expand reach, build connections, and increase visibility for initiatives and ideas.
Structure	Organized around a structured framework with thematic groups, regular activities, and engagement strategies.	More flexible, allowing members to connect informally and engage based on interest.
Membership	Level of integration (active participation, consulted members or informed members).	Informed Members (where members stay updated with project information).
Activities	<ul style="list-style-type: none">• Design thinking bootcamps;• Regular meetups;• Cross Fertilization Workshops;• Joint Policy Meeting;• Micro-Grant Calls;• Final Policy Paper;• Surveys & Feedback Loops;• Newsletter & Reports.	Information Sharing and Updates: <ul style="list-style-type: none">• Newsletters;• Updates on events and opportunities without direct involvement in CoP.



FAQs

What are the Stewardship Assemblies (SAs)?

The SAs are local assemblies where stakeholders collaborate on soil sustainability action plans and policy development in their regions. The main goal of SAs is using collective intelligence to develop place-based soil literacy solutions to local challenges.

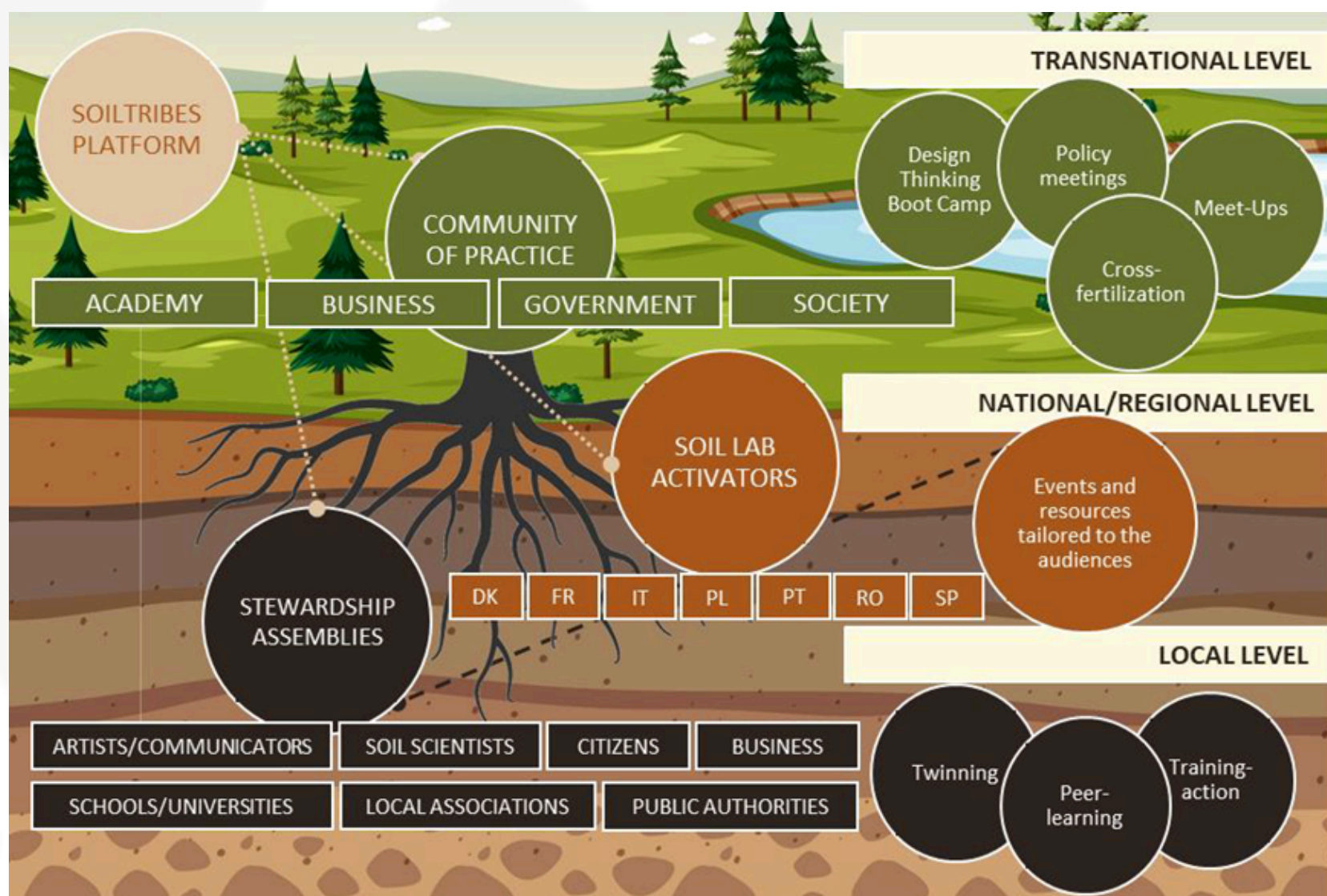


Figure 2 - SoilTribes Network Composition



FAQs

What are the differences between joining the CoP, the Network or the Stewardship Assemblies (SAs)?

The table below outlines the differences between joining the CoP, the Network and SAs.

	Community of Practice	Network	Stewardship Assemblies (SAs)
Goal	A dynamic community that strengthens expertise and fosters innovation through collaboration and shared experiences on soil sustainability challenges	An online network that aims to expand reach, build connections, and increase visibility for initiatives and ideas.	Local assemblies where stakeholders collaborate on soil sustainability action plans and policy development in their regions.
Structure	Organized around a structured framework with thematic groups, regular activities, and engagement strategies.	More flexible, allowing members to connect informally and engage based on interest.	Organized within a structured framework with a primary focus on local, region-specific solutions for soil sustainability.
Activities	<ul style="list-style-type: none">• Design thinking bootcamps;• Regular meetups;• Cross Fertilization Workshops;• Joint Policy Meeting;• Micro-Grant Calls;• Final Policy Paper;• Surveys & Feedback Loops;• Newsletter & Reports.	Information Sharing and Updates: <ul style="list-style-type: none">• Newsletters;• Updates on events and opportunities without direct involvement in CoP.	<ul style="list-style-type: none">• Peer-Learning;• Community Building;• Action Planning;• Training.



Contact us

For more information, or if you have any questions about joining the SoilTribes CoP, please contact us at **hello@soiltribes.eu**

We are here to help you become part of this important and impactful community.



hello@soiltribes.eu



www.soiltribes.eu

